

**MASSIVE OPEN  
ONLINE COURSE (MOOC)  
UNIVERSITAS AIRLANGGA**

**INVESTASI SAHAM  
UNTUK PEMULA**

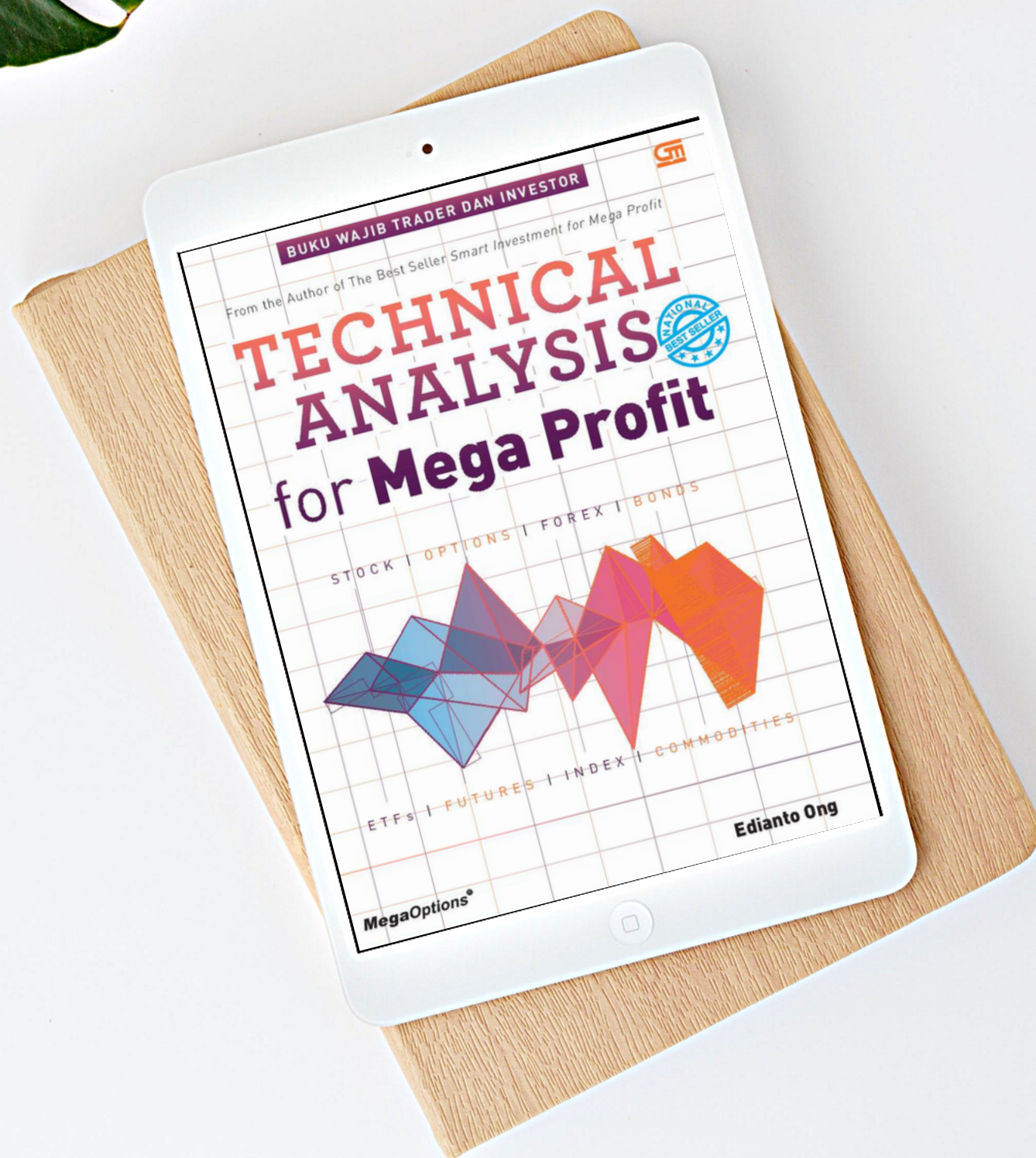
# Pertemuan 2

## Analisis Teknikal

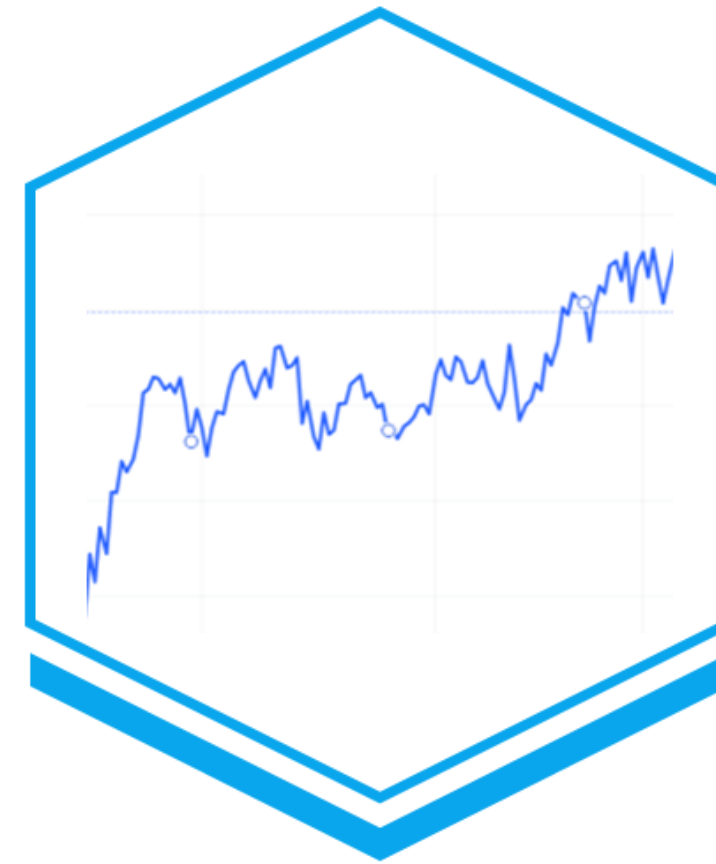




**Andre Pupung Darmawan**  
**Mahasiswa S1 Ekonomi Islam**  
**Investasi di BEI sudah 2 tahun**



**Analisis teknikal** adalah metode pengevaluasian saham ,komoditas ataupun sekuritas lainnya dengan cara menganalisis statistik yang dihasilkan oleh aktivitas pasar di masa lampau guna memprediksi pergerakan di masa mendatang.



**Line Charts**



**Bar Charts**



**Candle Charts**

# Charts

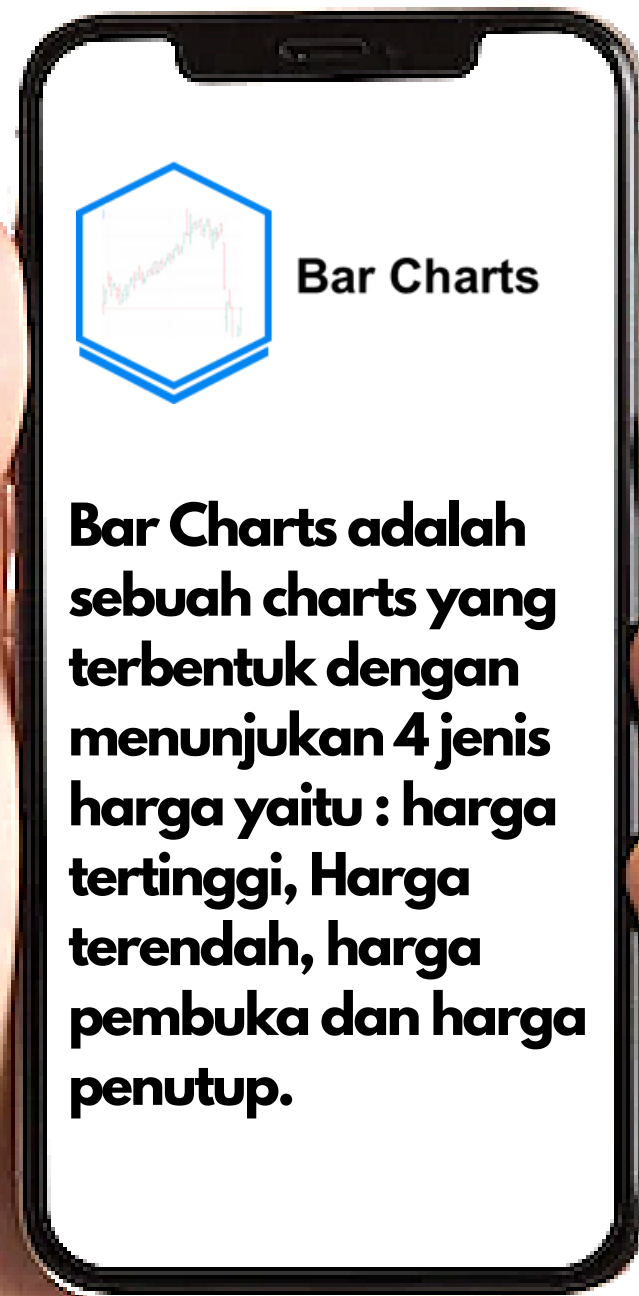


## Line Charts

**Grafik sederhana yang dibentuk dari harga penutup saham yang terjadi pada setiap hari perdagangan, sehingga linecharts tidak menunjukkan harga pembukaan, harga tertinggi, dan harga terendah**



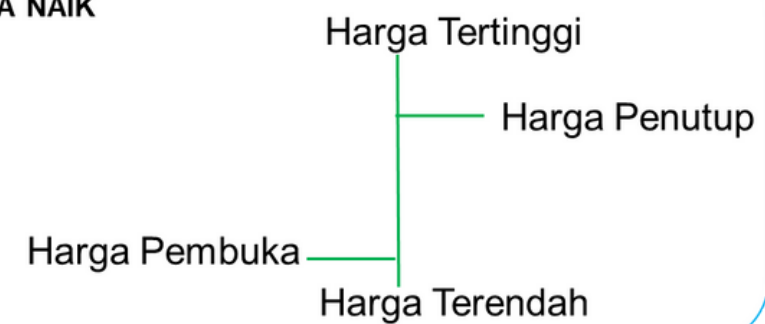
# Charts



**Bar Charts** adalah sebuah charts yang terbentuk dengan menunjukkan 4 jenis harga yaitu : harga tertinggi, Harga terendah, harga pembuka dan harga penutup.



HARGA NAIK



HARGA TURUN



# Charts

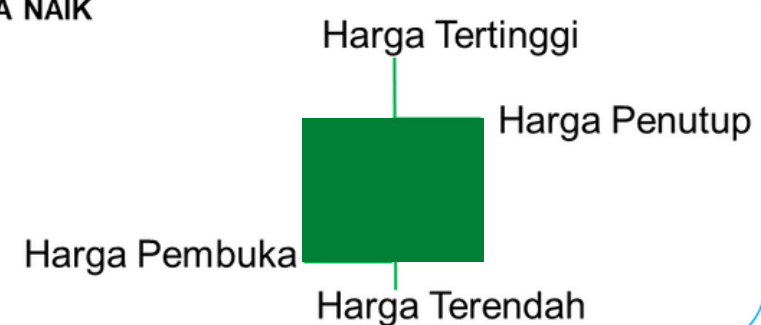


## Candle Charts

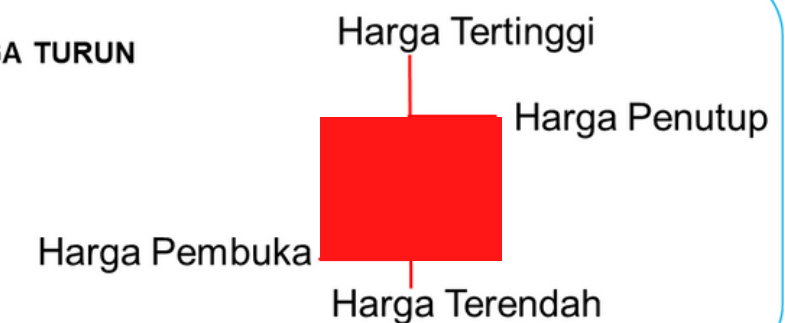
**Candle Charts** adalah sebuah charts yang terbentuk dengan menunjukkan 4 jenis harga yaitu : harga tertinggi, Harga terendah, harga pembuka dan harga penutup, hanya saja badan dari candelstick dibedakan warnanya antara harga menguat dan melemah.



### HARGA NAIK



### HARGA TURUN

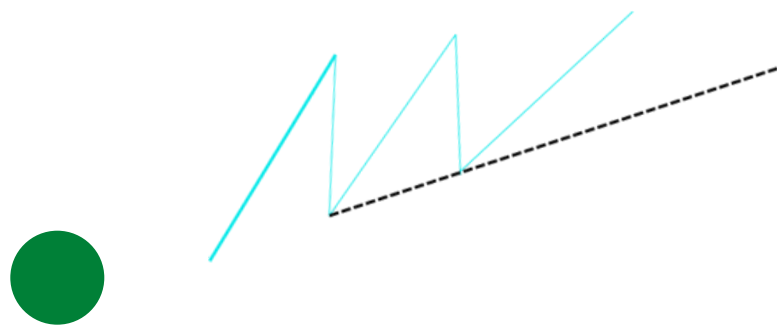


# UPTREND DOWNTREND & SIDEWAYS

Tren adalah salah satu dari tiga butir pemikiran dasar di dalam teknikal analisis secara ringkasnya adalah kecenderungan arah pergerakan harga saham pada suatu pasar.

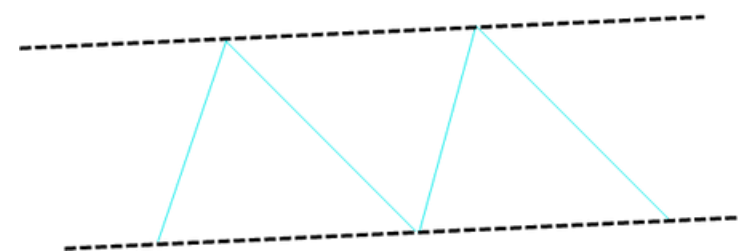
## Cara Menggambar Garis Uptrend

Dengan menghubungkan titik nilai harga terendah pada lembah-lembah yang terbentuk



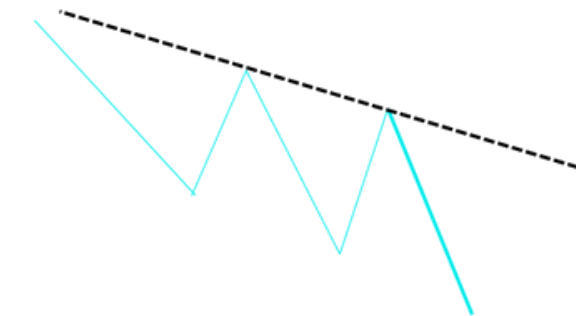
## Cara Menggambar Garis Sideways

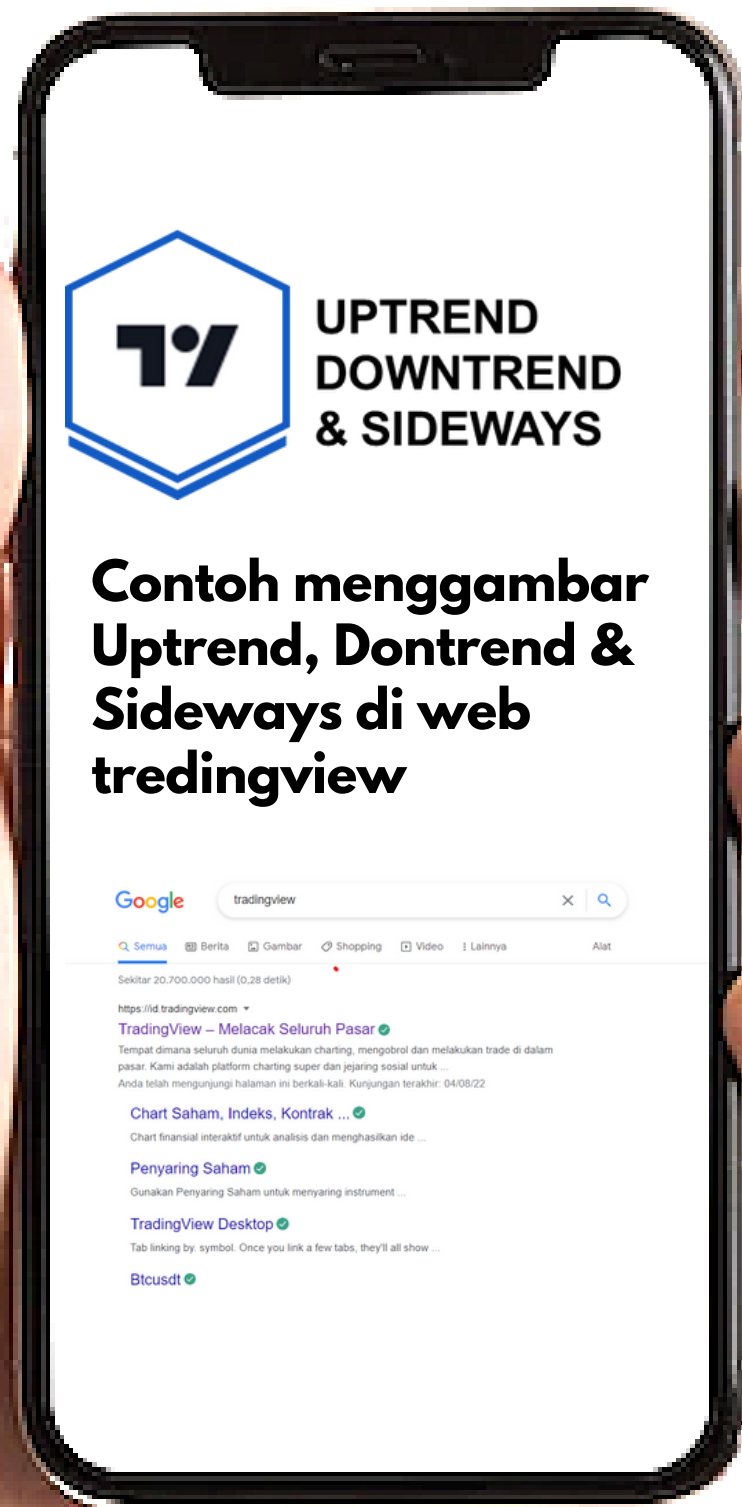
Dengan menghubungkan titik nilai harga tertinggi pada puncak-puncak yang terbentuk dan menghubungkan titik nilai harga terendah pada lembah-lembah yang terbentuk.



## Cara Menggambar Garis Downtrend

Dengan menghubungkan titik nilai harga tertinggi pada puncak-puncak yang terbentuk.







## RESISTANCE & SUPPORT

### Resistance

merupakan titik yang berperan sebagai "batas atas" dari suatu pergerakan harga.

### Support

merupakan titik yang berperan sebagai "batas batas" dari suatu pergerakan harga.



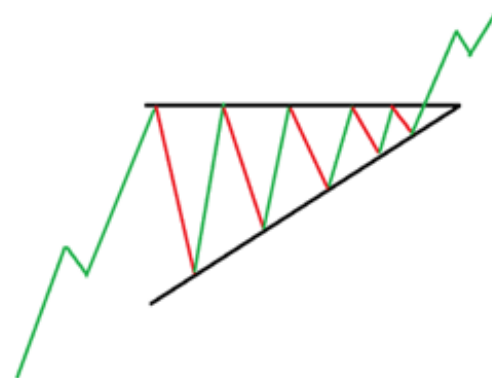


**BULLISH  
FORMATION**

# Jenis-Jenis Formasi Candlestick

Formasi bullish  
ditemukan di saham  
dengan tren naik yang  
kuat dan dianggap  
sebagai pola  
kelanjutan yang baik.

### Ascending Triangle



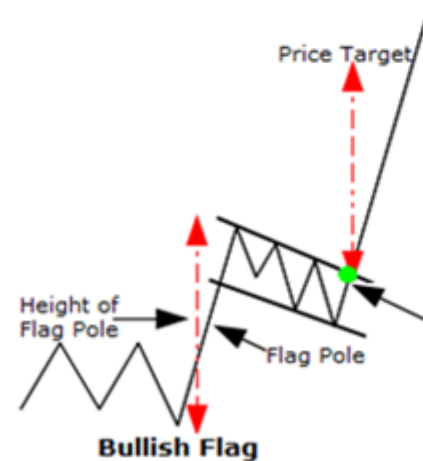
### Cup and Handle



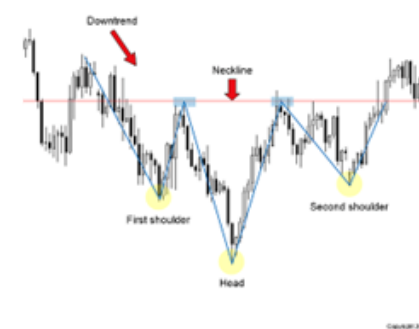
### Double Bottom



### Flag



### Inverted Head and Shoulders



### Bullish Pennant





**BULLISH  
FORMATION**

## CUP AND HANDLE



TradingView





BEARISH  
FORMATION

# Jenis-Jenis Formasi Candlestick

Formasi bearish  
ditemukan di saham  
dengan tren turun  
yang kuat dan  
dianggap sebagai  
pola kelanjutan yang  
buruk.

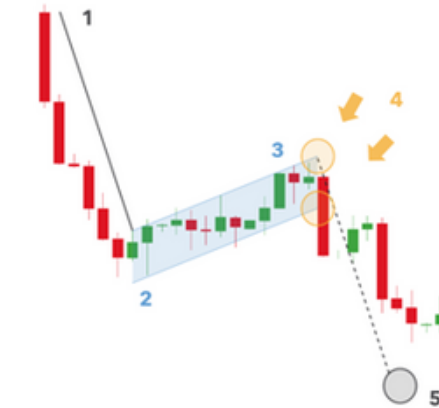
Double Top



Inverted Cup and Handle



Bearish Flag



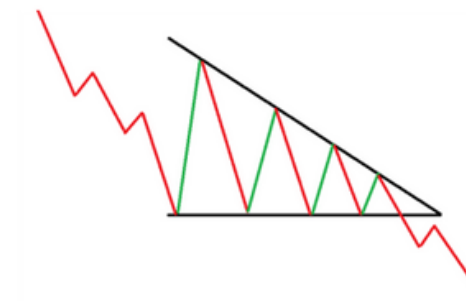
Bearish Pennant



Head and Shoulders



Descending Triangle





# BEARISH FORMATION

## BEARISH FLAG



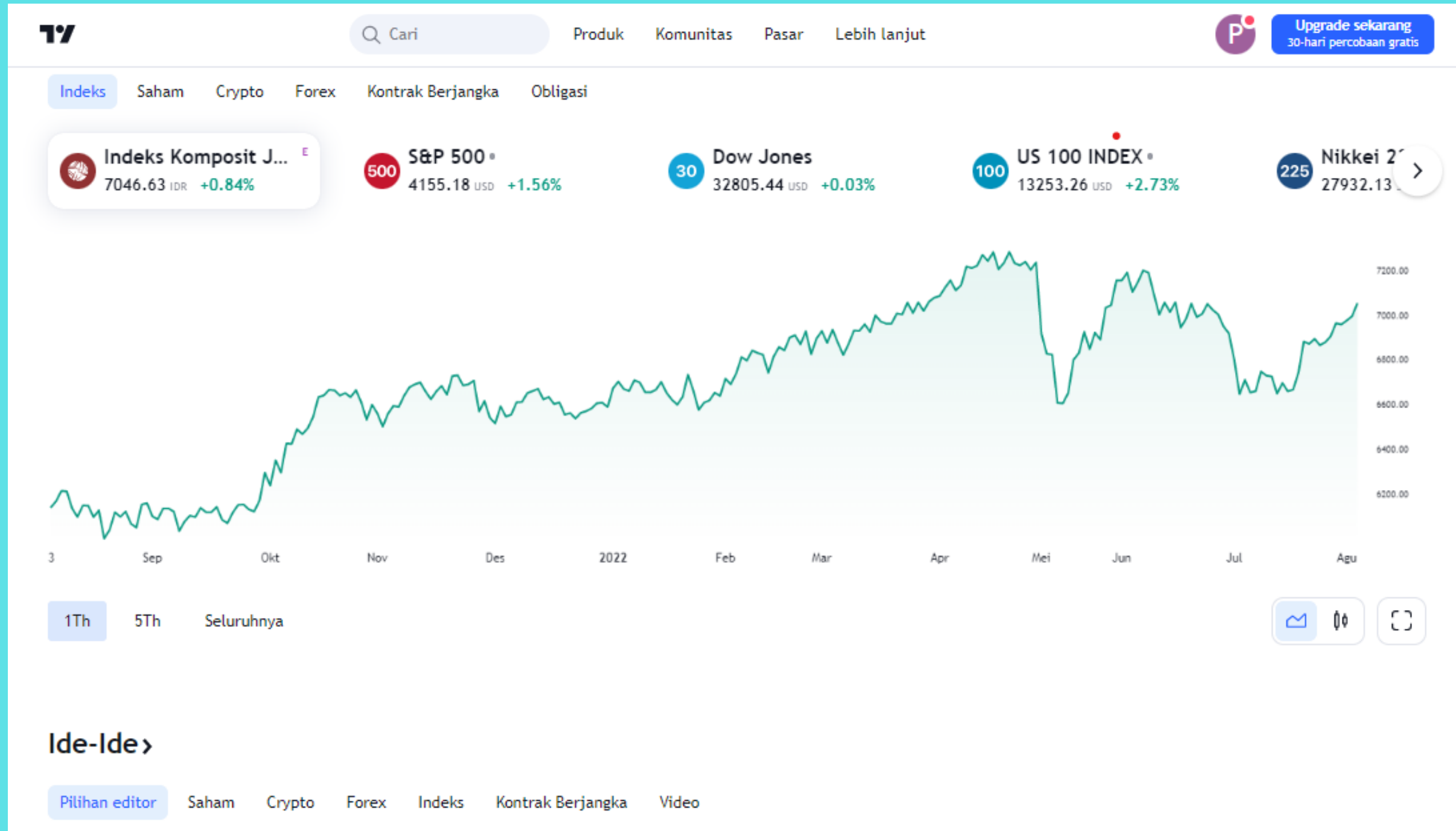
TradingView



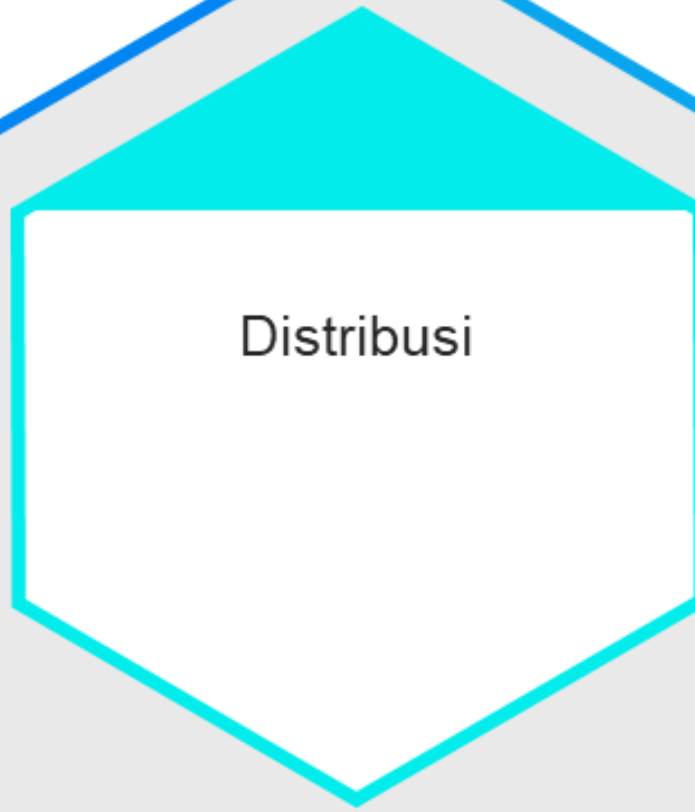
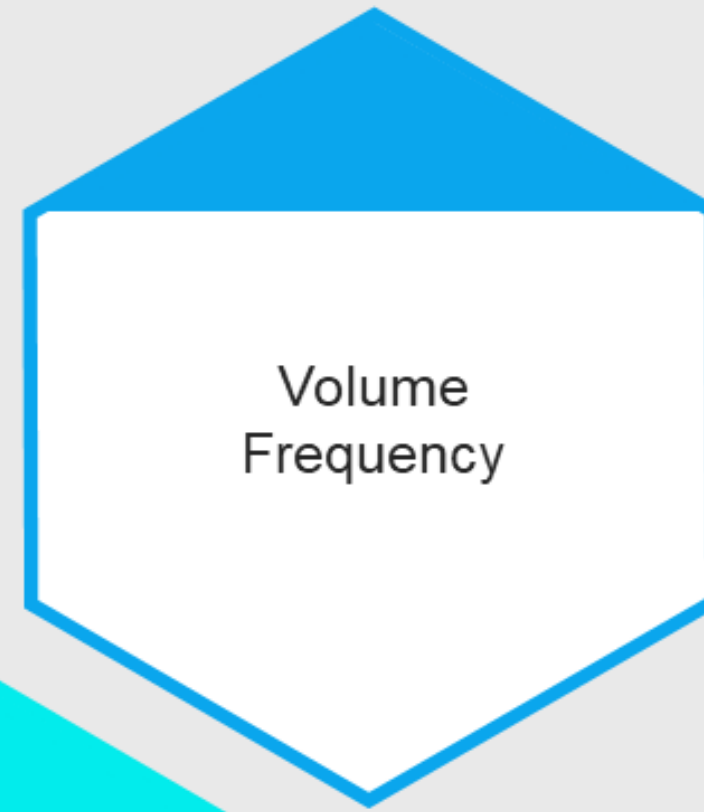
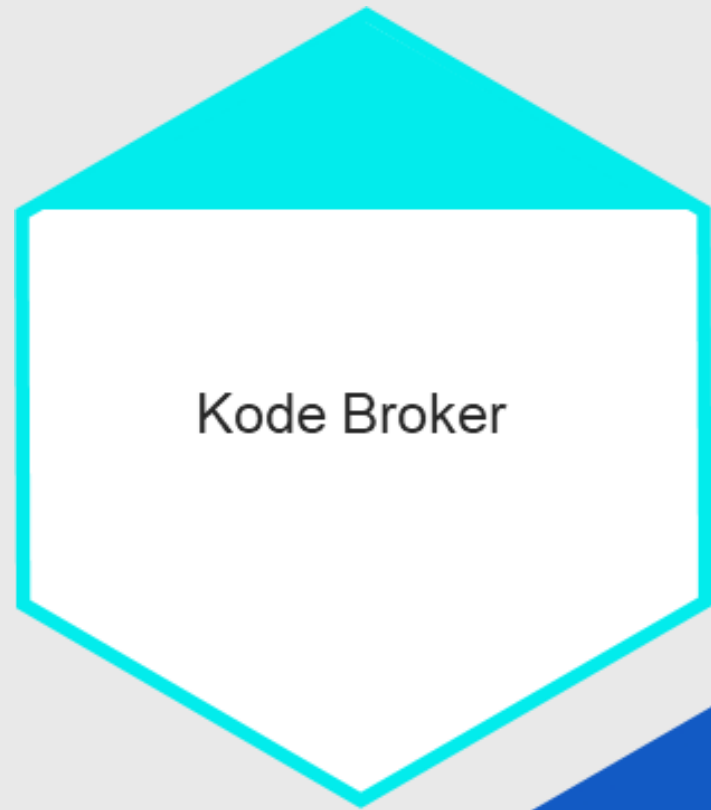
**BULLISH  
FORMATION**



**BEARISH  
FORMATION**



# **BROKER CONSISTENCY DAN TRANSAKSI**



Activity Summary (CAKK-&gt;Broker)

CAKK	08/06/2022	08/06/2022	Net					
All	RG	Show						
NBY	NBLot	NBVal	BAvg	#	NSL	NSLot	NSVal	SAvg
AZ	16,043	142.7 M	89.0	1	YP	-8,717	-77.4 M	88.6
NI	5,928	52.2 M	88.2	2	PD	-3,265	-28.8 M	88.5
GR	2,530	22.3 M	88.2	3	CC	-3,073	-26.8 M	88.1
HP	600	5.3 M	89.0	4	XC	-2,777	-24.7 M	88.8
KI	500	4.5 M	89.0	5	BQ	-1,610	-14.4 M	89.3
YB	336	3.0 M	89.0	6	DH	-1,050	-9.3 M	89.0
TP	75	662,500	88.3	7	MK	-1,000	-8.9 M	89.0
DR	35	231,500	87.4	8	ID	-1,000	-8.9 M	89.0
LG	21	186,800	89.0	9	XA	-862	-7.7 M	89.0

Activity Summary (CAKK-&gt;Broker)

CAKK	14/06/2022	14/06/2022	Net					
All	RG	Show						
NBY	NBLot	NBVal	BAvg	#	NSL	NSLot	NSVal	SAvg
AZ	32,868	299.1 M	91.0	1	CC	-8,340	-75.5 M	91.3
PD	2,641	24.2 M	91.6	2	XC	-8,189	-74.5 M	91.3
YP	2,210	20.2 M	91.9	3	XL	-7,404	-67.7 M	91.4
AT	1,683	15.6 M	92.0	4	ZP	-5,800	-52.8 M	91.0
DH	1,639	14.9 M	91.6	5	XA	-4,810	-44.3 M	92.1
YB	1,545	14.4 M	92.5	6	KK	-4,537	-41.4 M	91.7
EP	1,547	13.9 M	91.0	7	AI	-1,120	-10.3 M	91.9
LG	582	5.3 M	91.0	8	AO	-1,000	-9.2 M	92.0
MK	583	5.3 M	91.4	9	OD	-800	-7.4 M	92.0
MG	98	901,600	92.0	10	BQ	-795	-7.3 M	91.9
HP	50	460,000	92.0	11	DR	-753	-6.9 M	92.0
				12	NI	-773	-6.7 M	91.4
				13	CP	-535	-4.9 M	91.0
				14	SQ	-500	-4.6 M	91.7
				15	GR	-40	-468,000	91.0
				16	MU	-50	-467,500	93.5

Activity Summary (CAKK-&gt;Broker)

CAKK	10/06/2022	10/06/2022	Net					
All	RG	Show						
NBY	NBLot	NBVal	BAvg	#	NSL	NSLot	NSVal	SAvg
AZ	11,656	104.9 M	90.0	1	PD	-8,292	-74.7 M	90.0
YP	6,604	59.5 M	90.1	2	NI	-4,621	-41.6 M	90.1
CP	2,958	26.6 M	90.1	3	XL	-3,167	-28.5 M	90.0
DH	1,856	16.7 M	90.0	4	XA	-2,889	-26.0 M	90.0
YB	89	759,900	90.0	5	KK	-1,393	-12.6 M	90.5
DR	0	4,100	91.0	6	XC	-737	-6.6 M	90.0
				7	OD	-735	-6.6 M	90.0
				8	LS	-300	-2.7 M	90.0
				9	CC	-287	-2.6 M	90.1
				10	LG	-149	-1.3 M	90.3

Activity Summary (CAKK-&gt;Broker)

CAKK	15/06/2022	15/06/2022	Net					
All	RG	Show						
NBY	NBLot	NBVal	BAvg	#	NSL	NSLot	NSVal	SAvg
AZ	19,989	181.9 M	91.0	1	YU	-32,595	-298.6 M	91.6
PD	11,028	102.0 M	92.3	2	KK	-11,262	-102.7 M	91.3
EP	7,678	70.5 M	91.9	3	AT	-3,495	-32.5 M	92.9
CC	6,693	61.2 M	91.6	4	NI	-1,966	-18.4 M	92.5
BQ	1,584	14.5 M	92.0	5	HP	-1,950	-18.1 M	92.7
LG	1,531	13.9 M	91.0	6	XA	-1,541	-14.2 M	92.0
YP	1,209	12.1 M	92.3	7	XC	-481	-4.4 M	91.9
CP	1,000	9.2 M	92.0	8	YB	-255	-2.5 M	92.8
SQ	873	7.9 M	91.0	9	XL	-149	-1.5 M	91.9
MK	635	5.9 M	93.0	10	DH	-40	-368,000	92.0
DR	521	4.8 M	91.9	11	RS	-10	-91,000	91.0
FS	430	4.0 M	93.0	12				
GR	209	1.9 M	91.8	13				
TP	200	1.9 M	93.0	14				
TF	75	682,500	91.0	15				
MU	45	406,500	91.0	16				
OD	44	404,800	92.0	17				
HD	0	150,000	92.0	18				

Activity Summary (CAKK-&gt;Broker)

CAKK	13/06/2022	13/06/2022	Net					
All	RG	Show						
NBY	NBLot	NBVal	BAvg	#	NSL	NSLot	NSVal	SAvg
AZ	46,748	416.2 M	89.1	1	PD	-60,681	-576.5 M	93.9
YP	23,386	223.4 M	93.5	2	GR	-5,062	-49.1 M	95.0
XL	8,282	75.1 M	91.1	3	MG	-4,500	-44.0 M	97.0
BQ	2,981	52.8 M	95.5	4	KK	-3,482	-36.7 M	94.0
CC	3,521	25.9 M	92.2	5	XA	-3,040	-30.8 M	94.9
LG	2,446	22.3 M	90.8	6	NI	-3,128	-26.4 M	92.0
DR	2,089	21.7 M	94.9	7	AN	-2,000	-19.6 M	98.0
TF	-500	9.3 M	96.0	8	SQ	-1,818	-16.9 M	92.7
HP	575	5.4 M	91.3	9	YB	-1,544	-13.5 M	92.4
AI	620	5.0 M	89.3	10	LS	-1,500	-13.4 M	89.0
TP	350	3.6 M	92.2	11	EP	-1,106	-11.3 M	94.5

Activity Summary (CAKK-&gt;Broker)

CAKK	16/06/2022	16/06/2022	Net					
All	RG	Show						
NBY	NBLot	NBVal	BAvg	#	NSL	NSLot	NSVal	SAvg
AZ	60,272	566.8 M	94.0	1	YP	-46,681	-433.4 M	93.1
KK	13,216	122.0 M	92.8	2	YU	-21,480	-203.6 M	94.8
PD	3,242	29.8 M	93.1	3	XC	-3,873	-36.2 M	93.6
BQ	1,795	16.6 M	94.0	4	CC	-2,220	-21.8 M	93.5
GR	1,299	12.1 M	93.4	5	MG	-2,032	-19.3 M	95.0
NI	680	6.1 M	92.8	6	XA	-1,768	-16.1 M	92.0
MK	612	5.9 M	95.0	7	DR	-1,327	-12.5 M	94.3
CP	600	5.5 M	92.0	8	TP	-700	-6.6 M	94.4
IF	507	4.8 M	95.0	9	AT	-618	-5.7 M	93.2
LG	318	2.9 M	92.0	10	HP	-600	-5.7 M	95.0
YB	76	609,200	92.8	11	EP	-460	-4.2 M	93.0
OD	71	584,600	92.8	12	ZP	-200	-1.9 M	95.0
IN	0	0	92.0	13	SQ	-196	-1.8 M	93.6
				14	AG	-100	-950,000	95.0
				15	ES	-99	-940,500	95.0
				16	XL	-89	-882,400	94.1
				17	DH	-90	-860,000	94.3
				18	TF	-75	-697,500	93.0
				19	MU	-50	-472,000	94.4
				20	PC	-30	-276,000	92.0

Activity Summary (CAKK->Broker)

CAKK 17/06/2022 17/06/2022 Net

All RG Show

NBY	NBLot	NBVal	BAvg	#	NSL	NSLot	NSVal	SAvg
AZ	162,468	1.6 B	100.8	1	XC	-54,185	-569.3 M	103.7
XA	16,839	180.1 M	104.2	2	YP	-33,701	-291.6 M	103.3
KK	8,878	92.1 M	103.9	3	EP	-20,087	-213.4 M	104.9
NI	5,873	61.9 M	103.2	4	PG	-18,000	-191.6 M	106.4
PD	4,177	57.3 M	103.8	5	AG	-16,426	-165.1 M	101.9
AN	5,000	50.0 M	100.0	6	KI	-9,950	-101.5 M	102.0
AI	4,795	49.3 M	103.3	7	DH	-9,410	-101.0 M	103.6
OD	2,232	23.5 M	102.7	8	LG	-8,063	-87.5 M	104.0
MG	2,855	19.6 M	105.1	9	TP	-6,649	-68.2 M	102.5
MK	1,610	19.3 M	104.3	10	DR	-5,789	-61.6 M	104.0
AT	1,293	16.7 M	105.3	11	TF	-5,506	-58.9 M	106.5
CC	6	15.6 M	103.6	12	GR	-4,538	-53.1 M	104.7
YB	1,084	8.2 M	102.7	13	ZP	-4,978	-51.3 M	103.1
RO	600	6.2 M	104.0	14	SQ	-3,820	-47.7 M	104.5
XL	-179	2.9 M	103.1	15	YU	-3,810	-39.4 M	102.3
RG	12	124,800	104.0	16	BQ	-2,742	-29.9 M	103.9
CD	2	22,100	100.5	17	LS	-2,900	-29.8 M	102.1
AO	0	10,000	101.7	18	CP	-2,163	-19.0 M	102.4
				19	SH	-1,500	-14.7 M	98.0
				20	MU	-1,040	-11.0 M	105.7
				21	EL	-1,000	-10.2 M	102.0
				22	ID	-700	-7.3 M	105.0
				23	IF	-631	-6.0 M	102.4
				24	HP	138	-4.5 M	103.5
				25	PC	-145	-1.5 M	101.6
				26	DX	50	-85,900	104.9
				27	HD	0	-70,000	104.0
				28	YJ	0	-40,000	103.4
				29	IP	0	-14,500	100.0
				30	JB	0	-100	102.0

Activity Summary (CAKK->Broker)

CAKK 17/06/2022 30/06/2022 Net

All RG Show

NBY	NBLot	NBVal	BAvg	#	NSL	NSLot	NSVal	SAvg
AZ	203,748	2.0 B	103.5	1	CC	-51,570	-526.7 M	106.4
MG	38,843	366.6 M	106.9	2	XC	-45,456	-492.9 M	106.4
YB	13,634	232.6 M	108.3	3	YP	-28,841	-263.2 M	106.2
LG	15,093	165.4 M	105.6	4	EP	-20,363	-222.8 M	107.7
GR	13,920	138.5 M	105.6	5	KK	-17,409	-202.2 M	107.0
FZ	10,342	107.1 M	104.8	6	DH	-17,453	-189.9 M	107.1
IN	7,045	71.5 M	101.4	7	AG	-16,673	-168.4 M	102.7
CD	4,475	47.1 M	110.2	8	PG	-13,000	-140.6 M	106.4
HP	5,437	46.9 M	102.5	9	SQ	-11,178	-126.4 M	105.6
FS	3,000	33.6 M	111.9	10	YU	-9,420	-104.1 M	107.1
IF	1,359	14.4 M	107.1	11	PD	-15,714	-103.4 M	106.2
PC	671	10.0 M	110.5	12	KI	-10,000	-102.1 M	102.2
HD	748	9.9 M	109.7	13	TP	-9,238	-99.4 M	107.0
NI	-1,257	8.5 M	107.0	14	XL	-8,262	-97.3 M	107.1
MK	276	6.4 M	107.1	15	TF	-7,436	-80.8 M	108.1
YJ	66	2.7 M	112.3	16	AT	-5,841	-63.5 M	107.3
IU	200	2.1 M	103.0	17	AO	-4,120	-48.6 M	114.1
DX	201	2.0 M	104.1	18	CP	-4,201	-44.3 M	105.0
ES	0	205,000	114.5	19	LS	-3,495	-35.4 M	105.4
SF	20	130,000	107.3	20	ZP	-3,033	-32.3 M	107.4
DU	10	114,000	114.0	21	XA	-2,213	-31.9 M	106.9
RB	0	36,000	116.0	22	ZR	-2,305	-25.4 M	110.3
IH	0	1,000	106.0	23	DR	-2,866	-22.8 M	107.2
				24	AI	-1,842	-21.0 M	105.7
				25	OD	-2,288	-16.8 M	105.2
				26	SH	-1,500	-14.7 M	98.0
				27	EL	-1,000	-10.2 M	102.0
				28	MU	-915	-10.1 M	109.3
				29	AN	-250	-5.0 M	104.7
				30	ID	-200	-4.6 M	105.2
				31	BQ	238	-3.3 M	107.3

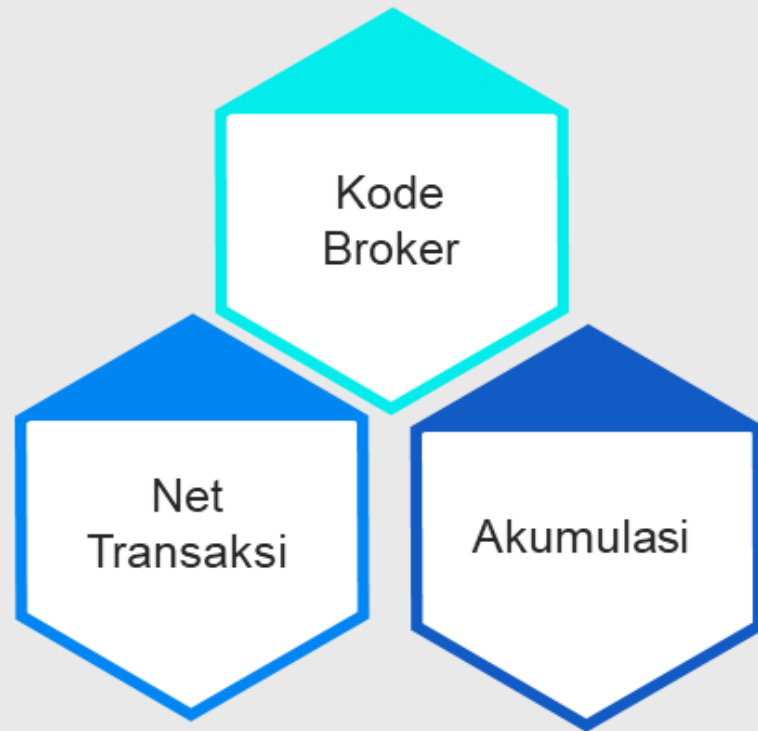
Activity Summary (CAKK->Broker)

CAKK 01/06/2022 30/06/2022 Net

All RG Show

NBY	NBLot	NBVal	BAvg	#	NSL	NSLot	NSVal	SAvg
AZ	390,769	3.8 B	98.9	1	XC	-76,285	-768.5 M	104.0
MG	32,409	303.6 M	106.8	2	PD	-76,404	-674.6 M	103.0
YB	17,026	263.3 M	107.4	3	CC	-61,073	-617.5 M	104.4
LG	22,830	234.6 M	103.5	4	YU	-63,388	-605.9 M	99.3
GR	18,374	174.8 M	102.9	5	YP	-44,177	-395.1 M	104.0
FZ	10,342	107.1 M	104.8	6	KK	-19,733	-227.5 M	104.2
IN	7,045	71.5 M	100.9	7	AG	-16,873	-170.3 M	102.6
BQ	4,929	65.4 M	104.7	8	DH	-14,744	-165.0 M	105.1
CD	4,525	47.5 M	110.1	9	EP	-13,575	-161.4 M	105.5
FS	3,430	37.6 M	109.6	10	XL	-13,985	-149.4 M	104.9
HP	3,626	29.8 M	101.3	11	XA	-14,464	-149.2 M	104.0
IF	1,863	19.2 M	106.7	12	SQ	-13,233	-144.7 M	103.9
HD	748	10.3 M	101.7	13	PG	-13,000	-140.6 M	106.4
PC	664	9.9 M	110.4	14	KI	-10,000	-102.1 M	101.5
MK	358	9.2 M	103.5	15	TP	-9,188	-98.8 M	105.4
IU	200	2.1 M	103.0	16	AT	-9,275	-95.6 M	104.5
DX	86	947,800	104.1	17	TF	-7,936	-71.6 M	94.5
SF	20	130,000	107.3	18	AO	-5,120	-57.8 M	110.8
DU	10	114,000	114.0	19	DR	-6,826	-55.9 M	104.4
RB	0	36,000	116.0	20	NI	-8,249	-55.4 M	103.0
IH	0	1,000	106.0	21	LS	-5,295	-51.4 M	101.7
				22	ZP	-3,008	-32.7 M	103.0
				23	OD	-3,880	-31.1 M	103.1
				24	ZR	-2,305	-25.4 M	110.3
				25	AN	-2,250	-24.6 M	103.2
				26	AI	-1,342	-17.5 M	104.3
				27	MU	-1,025	-11.1 M	107.5
				28	SH	-1,100	-11.1 M	98.0
				29	EL	-1,000	-10.2 M	102.0
				30	RO	-700	-6.8 M	101.9
				31	ID	-200	-4.6 M	102.9

TVal 89.8 B | FNVal 6.8 M | TLot 8.6 M | Avg 104.1



Activity Summary (CAKK->Broker)

CAKK 01/07/2022 13/07/2022 Net

NBY	NBLot	NBVal	BAvg	#	NSL	NSLot	NSVal	SAvg
AZ	201,381	2.1 B	114.6	1	YP	-175,577	-2.2 B	119.9
GR	67,647	984.8 M	131.6	2	CC	-73,794	-844.1 M	118.3
PG	52,500	575.6 M	110.7	3	XC	-57,522	-611.1 M	115.6
LG	48,690	539.0 M	113.9	4	NI	-24,215	-258.2 M	114.8
MG	35,849	528.0 M	113.4	5	KK	-17,796	-240.0 M	123.0
SQ	40,606	468.3 M	118.9	6	HP	-16,398	-170.7 M	112.8
CP	11,181	141.8 M	115.4	7	YB	-14,911	-169.9 M	119.7
DX	6,155	79.0 M	129.6	8	XL	-14,369	-157.4 M	116.6
BQ	-1,926	34.7 M	124.2	9	XA	-12,671	-131.1 M	117.4
AK	2,024	30.8 M	138.9	10	DH	-9,112	-120.5 M	122.1
OD	2,221	29.4 M	118.9	11	AT	-6,692	-83.5 M	126.6
BK	1,970	29.3 M	139.7	12	AI	-6,220	-76.4 M	121.9
PD	7,636	24.3 M	118.4	13	IN	-7,045	-74.4 M	105.6
EP	-457	22.9 M	121.1	14	ZP	-6,646	-74.2 M	117.6
LS	1,045	12.6 M	120.5	15	AO	-3,896	-51.0 M	125.1
ES	0	850,000	106.3	16	CD	-4,553	-50.8 M	123.9
				17	TP	-4,237	-50.3 M	121.1
				18	BR	-3,200	-34.3 M	107.1
				19	DR	-2,520	-34.1 M	120.4
				20	YU	-2,603	-32.2 M	129.8
				21	AG	-2,422	-28.3 M	119.8
				22	SH	-1,501	-21.3 M	142.0
				23	MU	-1,525	-19.9 M	130.4
				24	IF	-842	-14.5 M	123.5
				25	ZR	-1,000	-12.2 M	122.0
				26	YJ	-1,066	-11.9 M	112.2
				27	PC	-1,224	-10.9 M	123.7
				28	ID	-1,000	-10.7 M	103.0
				29	TF	-525	-8.0 M	116.6
				30	HD	-466	-4.7 M	124.2
				31	AN	-250	-3.6 M	118.6

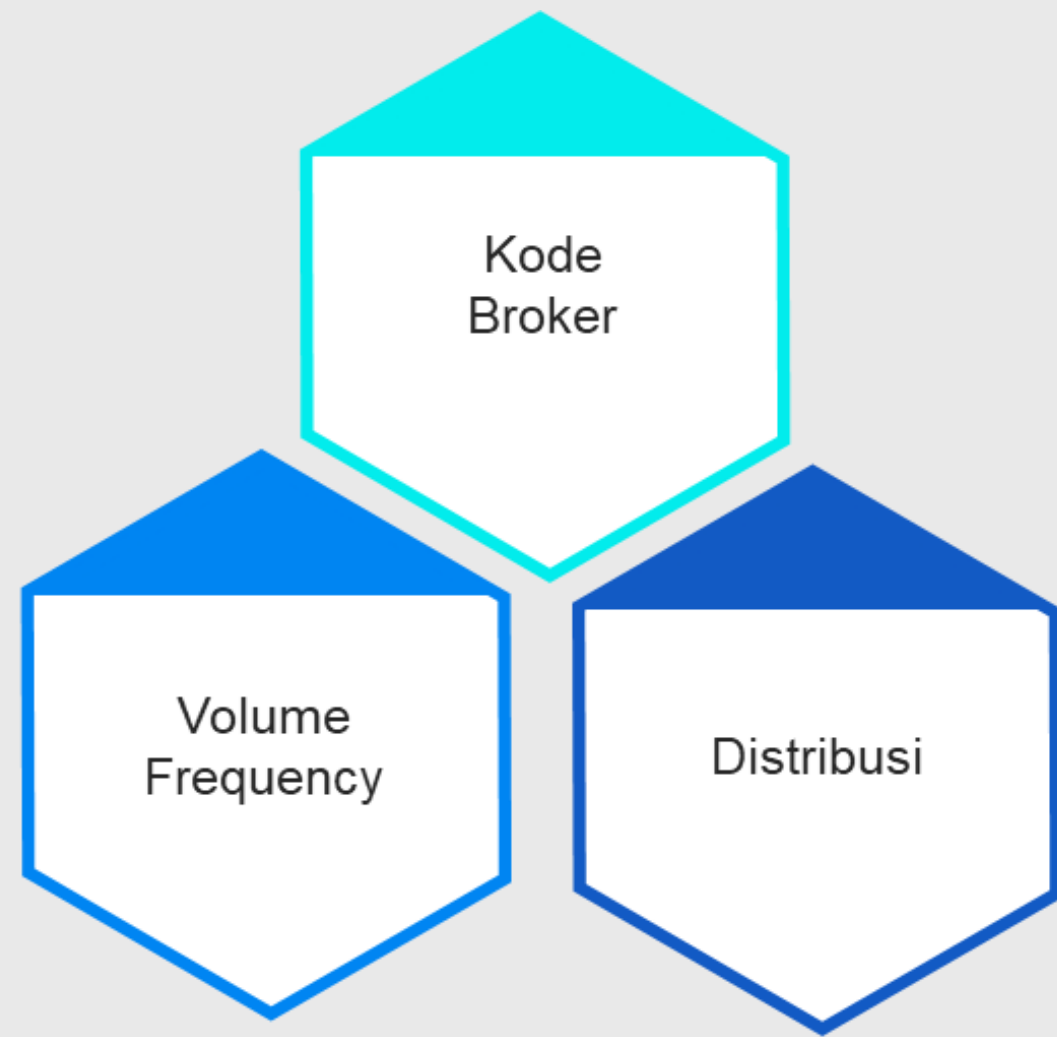
TVal 63.4 B | FNVal 253.1 M | TLot 5.3 M | Avg 119.1

Activity Summary (CAKK->Broker)

CAKK 01/06/2022 13/07/2022 Net

NBY	NBLot	NBVal	BAvg	#	NSL	NSLot	NSVal	SAvg
AZ	592,150	5.9 B	106.1	1	YP	-219,754	-2.6 B	110.4
GR	86,021	1.2 B	120.7	2	CC	-134,867	-1.5 B	109.8
MG	68,258	831.5 M	109.0	3	XC	-133,807	-1.4 B	107.8
LG	71,520	773.6 M	109.6	4	PD	-68,768	-650.2 M	109.3
PG	39,500	435.0 M	110.0	5	YU	-65,991	-638.1 M	103.1
SQ	27,373	323.6 M	112.5	6	KK	-37,529	-467.5 M	111.4
CP	11,490	138.2 M	107.8	7	NI	-32,464	-313.6 M	108.2
FZ	10,342	106.9 M	106.8	8	XL	-28,354	-306.8 M	109.3
BQ	3,003	100.1 M	111.2	9	DH	-23,856	-285.5 M	111.9
YB	2,115	93.5 M	111.0	10	XA	-27,135	-280.3 M	107.7
DX	6,241	80.0 M	124.3	11	AG	-19,295	-198.6 M	108.9
FS	3,430	37.6 M	109.6	12	AT	-15,967	-179.1 M	113.7
AK	2,024	30.8 M	138.9	13	TP	-13,425	-149.1 M	108.8
BK	1,970	29.3 M	139.7	14	HP	-12,772	-140.9 M	108.4
MK	71	9.0 M	108.1	15	EP	-14,032	-138.6 M	110.9
HD	282	5.6 M	107.6	16	AO	-9,016	-108.8 M	119.7
IF	1,021	4.6 M	110.6	17	ZP	-9,654	-106.8 M	108.2
ES	1	244,500	99.6	18	KI	-10,000	-102.1 M	101.7
RB	0	36,000	116.0	19	AI	-7,562	-93.9 M	110.0
DU	0	17,000	114.0	20	DR	-9,346	-90.0 M	109.2
IH	0	1,000	106.0	21	TF	-8,461	-79.6 M	96.3
				22	LS	-4,250	-38.8 M	104.1
				23	ZR	-3,305	-37.6 M	113.8
				24	BR	-3,200	-34.3 M	107.1
				25	SH	-2,601	-32.4 M	120.0
				26	MU	-2,550	-31.0 M	116.4
				27	AN	-2,500	-28.2 M	108.0
				28	ID	-1,200	-15.3 M	102.9
				29	YJ	-1,000	-13.1 M	94.9
				30	EL	-1,000	-10.2 M	102.0
				31	RO	-700	-6.9 M	104.2

TVal 153.2 B | FNVal 259.9 M | TLot 13.9 M | Avg 109.9



		19/02/2022	19/07/2022	Net					
All		RG	Show						
NBY	NBLot	NBVal	BAvg	#	NSL	NSLot	NSVal	SAvg	
II	105.8 M	1672.7 B	157.8	1	AN	-42.3 M	-667.0 B	157.5	
HP	6.8 M	108.7 B	156.3	2	FS	-31.3 M	-496.0 B	158.4	
DR	5.0 M	79.4 B	156.6	3	HD	-27.5 M	-437.3 B	158.8	
IU	1.1 M	17.9 B	157.7	4	CP	-27.1 M	-428.1 B	157.9	
RO	1.1 M	17.7 B	157.4	5	YJ	-2.0 M	-31.9 B	159.0	
FZ	1.1 M	16.9 B	157.9	6	TS	-1.3 M	-20.3 B	155.4	
CC	881,653	15.2 B	155.1	7	AI	-595,546	-9.3 B	151.9	
MK	913,370	14.4 B	157.7	8	AK	-568,336	-8.3 B	152.4	
BQ	841,113	13.6 B	158.8	9	OD	-77,816	-997.5 M	155.3	
IH	845,189	13.3 B	158.8	10	NI	-56,941	-936.8 M	150.0	
AZ	845,431	13.1 B	155.8	11	ZP	-116,862	-891.4 M	145.4	
IF	761,796	11.9 B	156.9	12	PD	-72,580	-811.2 M	151.8	
PS	737,910	11.6 B	158.0	13	GR	-25,733	-640.9 M	151.8	
BR	658,017	10.3 B	157.6	14	TP	-24,595	-394.8 M	153.8	
PO	634,042	9.8 B	157.2	15	XA	-14,589	-292.4 M	153.1	



Volume  
Frequency

#	CODE	NAME	LAST	CHG	%CHG	TVAL	TVOL	TFREQ
1.	ZINC	Kapuas Prima Coal Tbk.	81	+1	+1.25	58.87 B	720.28 M	1,434 -
2.	GOTO	GoTo Gojek Tokopedia Tbk.	326	+2	+0.62	122.08 B	378.33 M	2,339 -
3.	NATO	Surya Permata Andalan Tbk.	610	+15	+2.52	126.34 B	209.85 M	1,836 -
4.	BIPI	Astrindo Nusantara Infrastruktur Tb	138	+1	+0.73	19.79 B	143.46 M	893 -
5.	BUMI	Bumi Resources Tbk.	77	+2	+2.67	5.53 B	72.76 M	654 -
6.	SLIS	Gaya Abadi Sempurna Tbk.	208	+10	+5.05	11.87 B	56.40 M	6,835 -
7.	BEBS	Berkah Beton Sadaya Tbk.	4,500	-250	-5.26	245.76 B	53.93 M	1,299 -
8.	SWID	Saraswanti Indoland Development T	162	-1	-0.61	8.22 B	51.47 M	5,308 -
9.	ANTM	Aneka Tambang Tbk.	1,665	-55	-3.20	77.61 B	46.25 M	7,364 -
10.	FREN	Smartfren Telecom Tbk.	83	+1	+1.22	3.52 B	42.72 M	1,138 -
11.	BUKA	Bukalapak.com Tbk.	256	+4	+1.59	10.78 B	42.07 M	789 -
12.	RMKE	RMK Energy Tbk.	750	-20	-2.60	29.05 B	37.91 M	4,075 -
13.	ASHA	Cilacap Samudera Fishing Industry 1	256	+8	+3.23	8.45 B	33.87 M	2,498 -



<p>BUKU WAJIB TRADER DAN INVESTOR From the Author of The Best Seller Smart Investment for Mega Profit <b>TECHNICAL ANALYSIS</b> for <b>Mega Profit</b> STOCK   OPTIONS   FOREX   BONDS ETFs   FUTURES   INDEX   COMMODITIES MegaOptions* Edianto Ong</p>	<p><b>BANDARMOLOGY VS TEKNIKAL</b> ADA APA DI BALIK CANDLESTICK? William Hartanto</p>
<p><b>JAPANESE CANDLESTICK CHARTING TECHNIQUES</b> PANDUAN MENGOPTIMALKAN STRATEGI DAN TEKNIK INVESTASI DENGAN DIAGRAM CANDLESTICK ALA JEPANG STEVE NISON</p>	<p><b>Sekian Terimakasih</b></p>



**BULLISH  
FORMATION**



**BEARISH  
FORMATION**

**Membuat Garis Resisten Dan Support  
kemudian analisis berdasarkan jenis candlestick**

**Membuat analisi broker summery terkait saham  
yang sedang di akumulasi atau distribusi**

